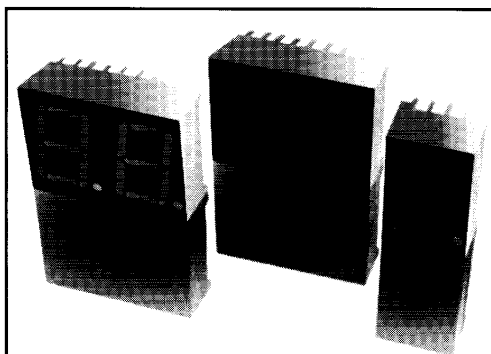


**RED MAN6700 SERIES**



**DESCRIPTION**

The MAN6700 Series is a family of large digits which includes double and single digits. The series features the sculptured font which minimizes "gappiness" at the segment intersections. Available models include two-digit, one and one-half digits with polarity sign, and single digits. All models have right hand decimal points and are available in common anode or common cathode configuration. Units are constructed with Black face and Red segment color.

**FEATURES**

- High performance GaAsP
- Large, easy to read, digits
- Common anode or common cathode models
- Also available in Orange (MAN6600 Series)
- Fast switching — excellent for multiplexing
- Low power consumption
- Bold solid segments that are highly legible
- Solid state reliability — long operation life
- Rugged plastic construction
- Directly compatible with integrated circuits
- High brightness with high contrast
- Categorized for Luminous Intensity (See Note 7)
- Wide viewing angle...150°
- Standard double-dip lead configuration
- Low forward voltage

**APPLICATIONS**

For industrial and consumer applications such as:

- Two-digit package simplifies alignment and assembly
- Digital readout displays
- Instrument panels
- Point of sale equipment
- Digital clocks
- TV and radios

**MODEL NUMBERS**

PART NUMBER	COLOR	DESCRIPTION	PACKAGE DRAWING	PIN OUT SPECIFICATION
MAN6710	Red	2 Digit; Common Anode; Rt. Hand Decimal	A	A
MAN6730	Red	1½ Digit; Common Anode; Overflow ±1.8; Rt. Hand Decimal	B	B
MAN6740	Red	2 Digit; Common Cathode; Rt. Hand Decimal	A	C
MAN6750	Red	1½ Digit; Common Cathode; Overflow ±1.8; Rt. Hand Decimal	B	D
MAN6760	Red	Single Digit; Common Anode; Rt. Hand Decimal	C	E
MAN6780	Red	Single Digit; Common Cathode; Rt. Hand Decimal	C	F

**RECOMMENDED OPTICAL FILTERS**

For optimum ON and OFF contrast, one of the following filters or equivalents should be used over the display:

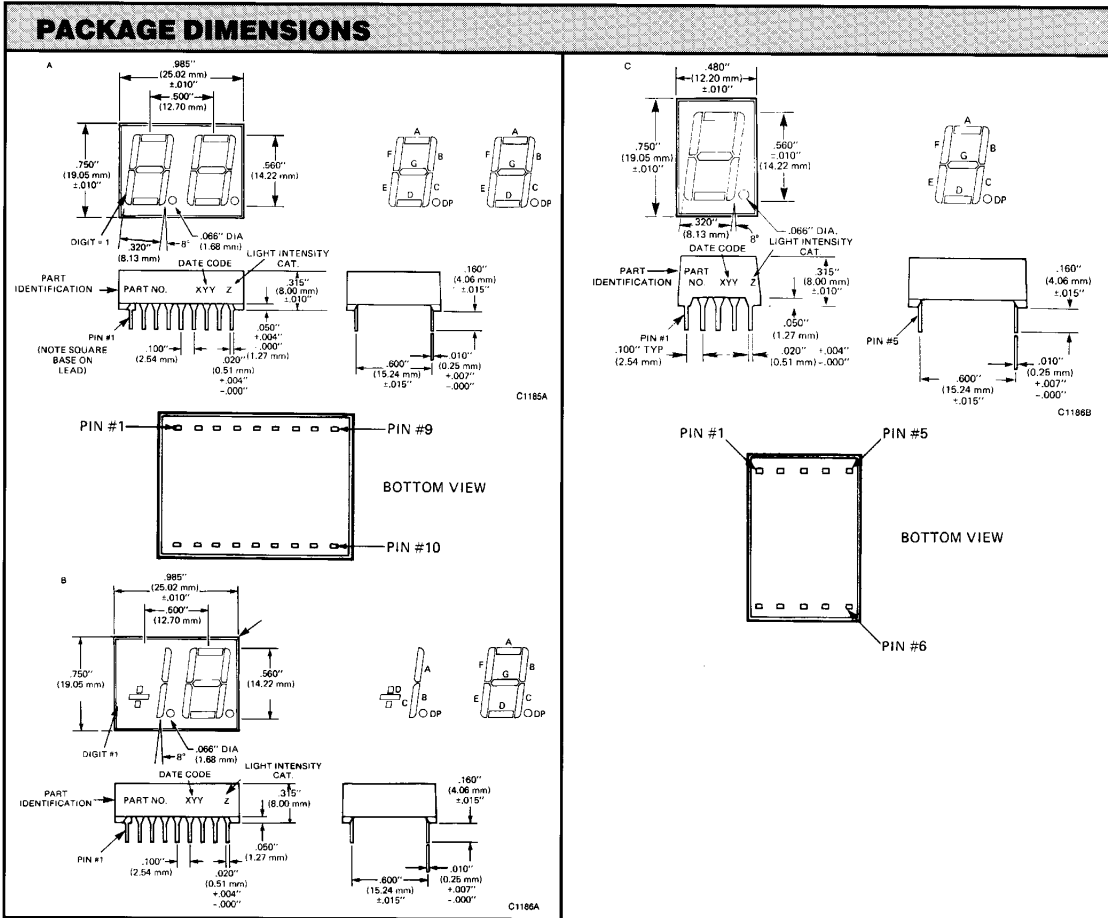
DEVICE TYPE	FILTER
MAN6700 Series	Panelgraphic Red 60 Homalite 100-1605

<b>ELECTRO-OPTICAL CHARACTERISTICS</b> (Per Diode at 25°C Free Air Temperature Unless Otherwise Specified)					
	MIN.	TYP.	MAX.	UNITS	TEST CONDITIONS
Luminous Intensity, digit average (See Note 1)	125	420		μcd	I <sub>F</sub> =10 mA
Peak emission wavelength		650		nm	
Spectral line half width		20		nm	
Forward voltage					
Segment			2.0	V	I <sub>F</sub> =20 mA
Decimal point			2.0	V	I <sub>F</sub> =20 mA
Dynamic resistance					
Segment		2		Ω	I <sub>F</sub> =20 mA
Decimal point		2		Ω	I <sub>F</sub> =20 mA
Capacitance					
Segment		35		pF	V=0
Decimal point		35		pF	V=0
Reverse current					
Segment			100	μA	V <sub>R</sub> =5.0 V
Decimal point			100	μA	V <sub>R</sub> =5.0 V
Segment C or D of "+" (6730/6750)			100	μA	V <sub>R</sub> =5.0 V

<b>ABSOLUTE MAXIMUM RATINGS</b>			
	MAN6710 MAN6740	MAN6730 MAN6750	MAN6760 MAN6780
Power dissipation at 25°C ambient	960 mW	840 mW	480 mW
Derate linearly from 25°C	-13.7 mW/°C	-12.0 mW/°C	-6.9 mW/°C
Storage and operating temperature	-40°C to +85°C	-40°C to +85°C	-40°C to +85°C
Continuous forward current			
Total	480 mA	420 mA	240 mA
Per segment	30 mA	30 mA	30 mA
Decimal point	30 mA	30 mA	30 mA
Reverse voltage			
Per segment	6.0 V	6.0 V	6.0 V
Decimal point	6.0 V	6.0 V	6.0 V
Soldering time at 260°C (See Notes 3 and 4)	5 sec.	5 sec.	5 sec.

<b>TYPICAL THERMAL CHARACTERISTICS</b>	
Thermal resistance junction to free air $\Phi_{JA}$	160°C/W
Wavelength temperature coefficient (case temperature)	3.0Å/°C
Forward voltage temperature coefficient	-2.0 mV/°C

<b>NOTES</b>
1. The digit average Luminous Intensity is obtained by summing the Luminous Intensity of each segment and dividing by the total number of segments. Intensity will not vary more than ±33.3% between all segments within a digit.
2. The curve in Figure 3 is normalized to the brightness at 25°C to indicate the relative efficiency over the operating temperature range.
3. Leads of the device immersed to 1/16 inch from the body. Maximum device surface temperature is 140°C.
4. For flux removal, Freon TF, Freon TE, Isoproponal or water may be used up to their boiling points.
5. Pins 3 and 8 on MAN6760 and MAN6780 are redundant anodes or cathodes.
6. All displays are categorized for Luminous Intensity. The Intensity category is marked on each part as a suffix letter to the part number.



**ELECTRICAL CONNECTIONS**

Pin No.	ELECTRICAL CONNECTIONS					
	A MAN6710	B MAN6730	C MAN6740	D MAN6750	E MAN6760	F MAN6780
1	Cathode E 1	Cathode C 1	Anode E 1	Anode C 1	Cathode E	Anode E
2	Cathode D 1	Cathode D 1	Anode D 1	Anode D 1	Cathode D	Anode D
3	Cathode C 1	Cathode B 1	Anode C 1	Anode B 1	Com. Anode	Com. Cathode
4	Cathode D.P. 1	Cathode D.P. 1	Anode D.P. 1	Anode D.P. 1	Cathode C	Anode C
5	Cathode E 2	Cathode E 2	Anode E 2	Anode E 2	Cathode D.P.	Anode D.P.
6	Cathode D 2	Cathode D 2	Anode D 2	Anode D 2	Cathode B	Anode B
7	Cathode G 2	Cathode G 2	Anode G 2	Anode G 2	Cathode A	Anode A
8	Cathode C 2	Cathode C 2	Anode C 2	Anode C 2	Com. Anode	Com. Cathode
9	Cathode D.P. 2	Cathode D.P. 2	Anode D.P. 2	Anode D.P. 2	Cathode F	Anode F
10	Cathode B 2	Cathode B 2	Anode B 2	Anode B 2	Cathode G	Anode G
11	Cathode A 2	Cathode A 2	Anode A 2	Anode A 2		
12	Cathode F 2	Cathode F 2	Anode F 2	Anode F 2		
13	Anode Digit 2	Anode Digit 2	Cathode Digit 2	Cathode Digit 2		
14	Anode Digit 1	Anode Digit 1	Cathode Digit 1	Cathode Digit 1		
15	Cathode B 1	Cathode A 1	Anode B 1	Anode A 1		
16	Cathode A 1	No Connection	Anode A 1	No Connection		
17	Cathode G 1	No Connection	Anode G 1	No Connection		
18	Cathode F 1	No Connection	Anode F 1	No Connection		

**TYPICAL CHARACTERISTIC CURVES**

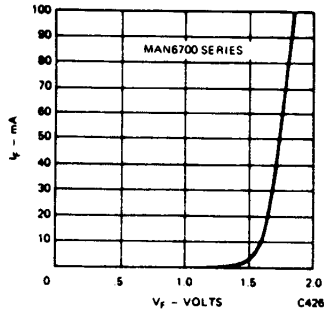


Fig. 1. Forward Current vs. Forward Voltage

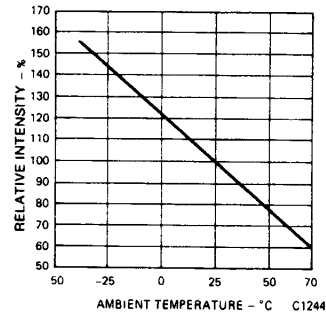


Fig. 2. Relative Luminous Intensity vs. Temperature (See Note 2)

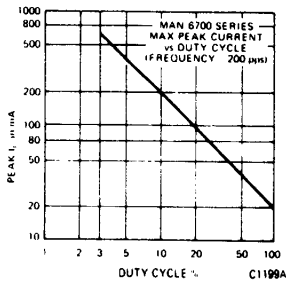


Fig. 3. Max Peak Current vs. Duty Cycle

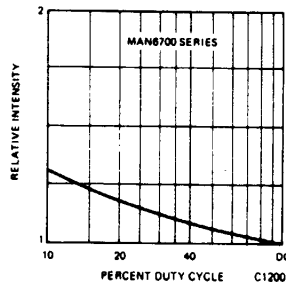


Fig. 4. Luminous Intensity vs. Duty Cycle

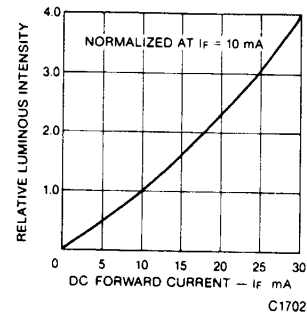
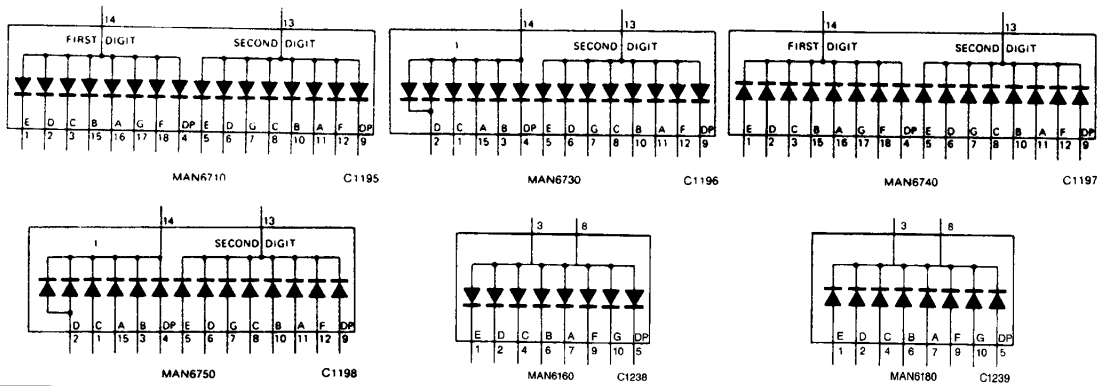


Fig. 5. Relative Luminous Intensity vs. Forward Current

**INTERNAL CONNECTIONS**





## 0.560-INCH SEVEN SEGMENT DISPLAYS

---

### **DISCLAIMER**

FAIRCHILD SEMICONDUCTOR RESERVES THE RIGHT TO MAKE CHANGES WITHOUT FURTHER NOTICE TO ANY PRODUCTS HEREIN TO IMPROVE RELIABILITY, FUNCTION OR DESIGN. FAIRCHILD DOES NOT ASSUME ANY LIABILITY ARISING OUT OF THE APPLICATION OR USE OF ANY PRODUCT OR CIRCUIT DESCRIBED HEREIN; NEITHER DOES IT CONVEY ANY LICENSE UNDER ITS PATENT RIGHTS, NOR THE RIGHTS OF OTHERS.

### **LIFE SUPPORT POLICY**

FAIRCHILD'S PRODUCTS ARE NOT AUTHORIZED FOR USE AS CRITICAL COMPONENTS IN LIFE SUPPORT DEVICES OR SYSTEMS WITHOUT THE EXPRESS WRITTEN APPROVAL OF THE PRESIDENT OF FAIRCHILD SEMICONDUCTOR CORPORATION. As used herein:

1. Life support devices or systems are devices or systems which, (a) are intended for surgical implant into the body, or (b) support or sustain life, and (c) whose failure to perform when properly used in accordance with instructions for use provided in the labeling, can be reasonably expected to result in a significant injury of the user.
2. A critical component in any component of a life support device or system whose failure to perform can be reasonably expected to cause the failure of the life support device or system, or to affect its safety or effectiveness.

This datasheet has been download from:

[www.datasheetcatalog.com](http://www.datasheetcatalog.com)

Datasheets for electronics components.